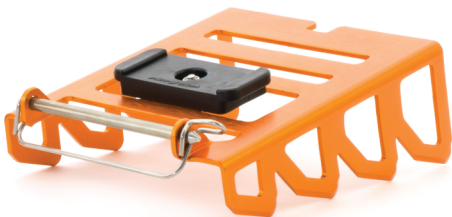




splitboard crampons



- Recommended for icy skin tracks and ascents where exposure is high
 - Functions in 2 modes: Fixed and Mobile
 - Works with Voilé Slider Track
 - Max. width board half 13.7cm
 - Weight/pr 1lb/0.45kg

Not compatible with new 2012-2013 Voilé Lightrail splitboard binding



7 59948 11401 9



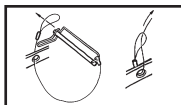
voile.com
801.973.8622



splitboard crampons

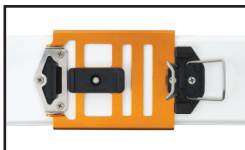
CRAMPON INSTRUCTIONS

1) Attach included longer Slider Pin to your binding. Attach using girth hitch method. Must use LONGER Slider Pin with crampon.



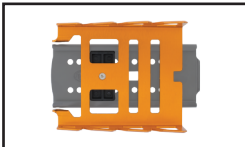
2) For Fixed mode, rotate black block parallel to crampon. Slide notch at back of crampon under heel pad. Holes of crampon line up with touring bracket holes. Slide pin through and secure binding and crampon.

FIXED MODE



3) For Mobile mode, rotate black block perpendicular to crampon. Slide the binding onto black block and align holes of crampon to touring bracket. Slide pin through and secure binding and crampon.

MOBILE MODE



VOILE MANUFACTURING
2636 S 2700 W • Salt Lake City, UT
voile.com • 801.973.8622